



SOUTH
KESTEVEN
DISTRICT
COUNCIL



Housing Overview and Scrutiny Committee

Thursday, 6 June 2024

Report of Cllr Virginia Moran, Cabinet
Member for Housing

Change4Lincs (C4L) Update

Report Author

Sarah McQueen, Head of Service (Housing Options)

 sarah.mcqueen@southkesteven.gov.uk

Purpose of Report

This report seeks to update Committee on the Change4Lincs partnership and the progress that has been made by the team.

Recommendations

That the Committee notes the latest update for the Change4Lincs partnership initiative.

Decision Information	
Does the report contain any exempt or confidential information not for publication?	No
What are the relevant corporate priorities?	Connecting communities Housing
Which wards are impacted?	All Wards

1. Implications

Taking into consideration implications relating to finance and procurement, legal and governance, risk and mitigation, health and safety, diversity and inclusion, safeguarding, staffing, community safety, mental health and wellbeing and the impact on the Council's declaration of a climate change emergency, the following implications have been identified:

Finance and Procurement

- 1.1 Grant funding has been awarded for the period to 31 March 2025 and has been included in the approved budget for 2024/25. There is no cost to the Council for the additional costs of emergency accommodation as these will be funded from the grant.

Completed by: Richard Wyles, Deputy Chief Executive and s151 Officer

Legal and Governance

- 1.2 This is an update report and is for noting by the Committee.

Completed by: James Welbourn, Democratic Services Manager and Deputy Monitoring Officer

2. Background to the Report

- 2.1 Change4Lincs is an initiative which has been set up to tackle rough sleeping across Lincolnshire for South Kesteven, North Kesteven, West Lindsey and South Holland.
- 2.2 The scheme is hosted by South Kesteven District Council and is delivered in partnership with North Kesteven District Council, West Lindsey District Council and South Holland District Council from pooling the Rough Sleeper Initiative

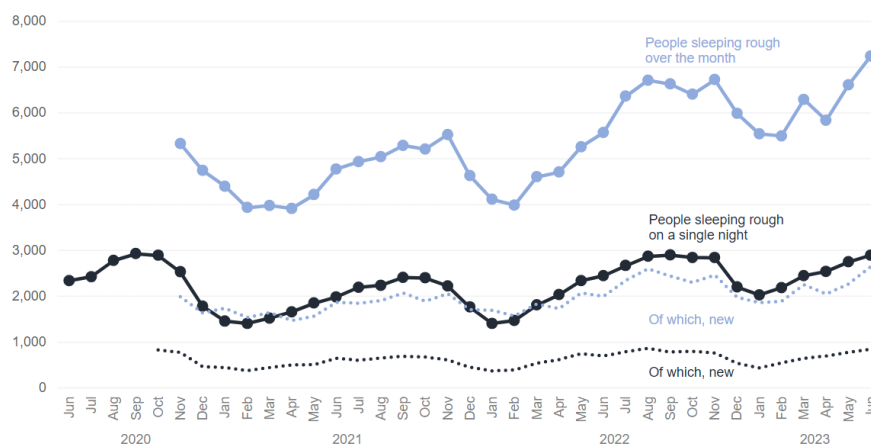
funding to create this scheme. The initiative was launched in October 2020 and funding is secured until March 2025.

- 2.3 Regular Change4Lincs Strategic Partnership Meetings have been initiated, the last meeting took place on 21 February 2024. This allows the progress of the initiative to be reviewed and feedback received from the partners. In addition, regular operational meetings take place with the Managers from the District Councils.
- 2.4 Rough sleepers can be referred by each local authority as well as the general public where there are concerns about a known rough sleeper. The outreach team then seek to visit the rough sleeper onsite to capture all relevant information, discuss their options and pass on to the support workers.
- 2.5 The package of support provided by the team is bespoke for each client dependent on their need. Support includes help with budgeting, benefit claims, signposting to mental health services and substance misuse services.
- 2.6 Support has the clear aim of supporting clients back into settled accommodation.
- 2.7 As funding is only currently in place to run this service until March 2025, discussions are being held with districts in relation to the future of this service and whether the partnership will continue in its current format. Central Government are yet to announce Rough Sleeper initiative funding for 2025/2026 so once this is announced the four districts will decide if a joint bid will be submitted.

3. Key Considerations

- 3.1 Over the past years, the number of rough sleepers has increased which is a national trend.
- 3.2 The below graph shows the national figures from 2020 to June 2023. The blue line is the number of people sleeping rough over the month which is where you can see a steep increase to June 2023.

Figure 1: People sleeping rough on a single night and over the course of the month, June 2020 to June 2023



Source: Support for people sleeping rough in England, June 2023 - GOV.UK (www.gov.uk)

- 3.3 Central government collates an annual Rough Sleeper count each November where each local authority report their rough sleeper numbers based on a single night's figure.
- 3.4 South Kesteven's Rough Sleeper figures reflect the national trend and show an increase from 7 reported in the 2022 annual return to 9 reported in the 2023 annual return.
- 3.5 Table 1 illustrates the Rough sleeper figures across our Chartered Institute of Public Finance & Accountancy (CIPFA) family ; Local Authorities with similar attributes that can be used for benchmarking purposes.

Local Authority	2022	2023	Trend
Amber Valley	0	1	Increase
Bassetlaw	8	5	Decrease
Braintree	3	7	Increase
Breckland	15	6	Decrease
Broxtowe	2	1	Decrease

Chorley	6	6	Same
Gedling	1	4	Increase
Harrogate	Part of North Yorkshire Council so data not available		
High Peak	3	3	Same
Hinckley and Bosworth	3	5	Increase
Mendip	Part of Somerset Council so data not available		
Newark and Sherwood	3	1	Decrease
Stafford	10	12	Increase
Stroud	3	5	Increase
West Suffolk	6	8	Increase
South Kesteven	7	9	Increase

3.6 Of the 16 Local authorities, 8 have seen an increase in their Rough Sleeper figures, 2 have stayed the same, 4 have seen a decrease and 2 were not able to report figures for just their local authority.

3.7 Table 2 shows the demand on the Change4Lincs service from April 2023 to April 2024. The figures show a significant increase in the demand for the service – the total number of referrals has increased by 94%. The figures in brackets are the previous year's figures for comparison purposes.

District	Total Number of referrals	Outreach referrals	Support referrals	Placed in Temporary accommodation via C4L
South Kesteven	193 (63)	144 (56)	49 (7)	7 (26)
North Kesteven	79 (60)	60 (47)	19 (13)	3 (11)
West Lindsey	77 (46)	66 (33)	11 (13)	1 (6)
South Holland	115 (70)	113 (69)	2 (1)	4 (28)
Total	464 (239)	383 (205)	81 (34)	15 (71)

3.8 Table 3 shows the accommodation outcomes for the clients that have been supported by the service.

District	Accommodated via C4L (long term)	Accommodated via supported accommodation
South Kesteven	11 (6)	4 (1)
North Kesteven	6 (3)	2 (8)
West Lindsey	5 (4)	7 (2)
South Holland	1 (1)	3 (3)
Total	23 (23)	16 (14)

- 3.9 The team is currently managed by the Change 4 Lincs Team Leader and is supported by our Head of Housing Options. The team consists of 3 outreach workers, 5 intensive support officers, 1 reconnection and support officer and a lettings officer.
- 3.10 Due to overspends on temporary accommodation in previous years, during 2023/2024 the service had to scale back the temporary accommodation offer so that only exceptional cases were accommodated.
- 3.11 However, because we took this stance, it has meant that we have re-couped the overspends so there will be no ongoing impact on the 2024/25 budget.
- 3.12 Through partnership working with each district we have developed a clear plan regarding how this budget is utilised for accommodation to ensure there are no future overspends. The focus will be on very short term accommodation placements with wraparound support to move people on from placements as quickly as possible.
- 3.13 We will continue to work with partners to ensure that the relevant support is accessed and in place.
- 3.14 Supporting Rough Sleepers can be extremely complex and is often far more than just sourcing accommodation so partnership working is essential for this service and we will continue to strengthen our working relationships

4. Other Options Considered

- 4.1 This report is for information purposes.